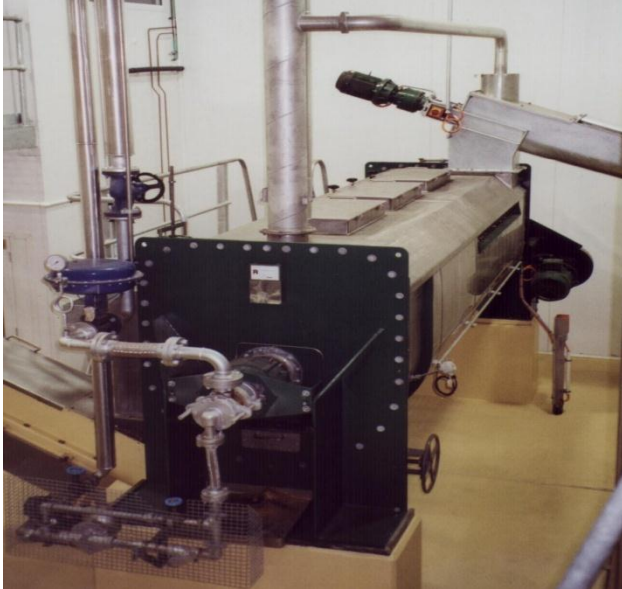


## PRE-COOKER



The **Rendertech** Precooker is a steam heated, indirect cooker for heating meat and poultry 'by-products' prior to mechanical dewatering in wet rendering systems. It can also be used for energy saving in continuous dry rendering systems. On this application the Precooker is used to heat the raw material prior to the main cooker, using hot water as the heating medium. The hot water is generated from the 'waste heat' from the cooker vapour hence reducing steam consumption in dry rendering systems by up to 15%.

### DESCRIPTION

The Precooker consists of a horizontal shell with a disc rotor for heating and transport of the product. The rotor comprises a tubular shaft supporting a number of steam heated hollow discs. Agitator paddles are fitted to the periphery of the discs to transport the material along the precooker.

The shell is equipped with covers along the length to provide access for inspection and cleaning. Feed is through a flanged chute at the inlet end and discharge is over an adjustable weir at the outlet end.

### KEY FEATURES

- Low Power Consumption.
- Handles difficult and sticky products
- Low maintenance costs – robust construction.
- Simple to operate.
- Hinged covers along the full length of the shell to provide access for inspection and cleaning.
- Adjustable weir outlet for level control.
- Bottom outlet with knife gate valve for emptying.
- Drive by heavy duty shaft mounted gear reducer.
- Indirect heating method adds no water to the product.
- Shell manufactured from stainless steel.
- Stainless steel rotor optional.
- Flanged nozzle for connection to odour control system.
- Manufactured to PD5500 pressure vessel code.
- Normal working steam pressure 600 kPa.
- Shell insulated and clad with stainless steel.
- Steam and condensate equipment, valves, strainers, steam traps etc incl.

MODEL	NOMINAL CAPACITY T/HR	DRIVE MOTOR kW	DIMENSIONS				SHIPPING WEIGHT KG
			A mm	B mm	C mm	D mm	
PC 5	5	11	5820	3885	1500	1530	4,200
PC 8.5	8.5	11	6735	4800	1500	1530	5,000
PC 10	10	15	6465	4400	1677	1780	7,100
PC 15	15	22	5990	3975	2125	2150	9,100
PC 20	20	22	7190	5110	2125	2150	10,800